



AGRICULTURAL MACHINERY

sitrex®

***OPERATOR'S AND
SERVICE PARTS MANUAL***

RP/4-RP/5-RP/6-RP/8-RP/10-RP/12



MOUNTED SIDE-DELIVERY RAKES: RP/4-RP/5-RP/6-RP/8-RP/10-RP/12

INTRODUCTION

This manual includes full instructions for a correct use and maintenance of the machinery, and the recommended spare parts list.

In order to prevent any possible damage of the machine and/or the operator(s) you are kindly requested to go through this manual for a proper knowledge of the assembly of the implements, their use on the field, and their maintenance. If any doubt, please contact your local dealer or distributor.

Should the machine be re-sold, you are kindly requested to supply this manual along with the machine to the new purchaser.

WARRANTY

SITREX s.r.l. warrants new Sitrex machinery at the time of delivery to the original purchaser to be free from defects in material and workmanship if properly set up and operated in accordance with this Operator's Manual.

Sitrex undertakes to repair or replace free of charge any defective part which should be returned by the purchaser (freight prepaid) and found to be defective by inspection authorized by Sitrex during the warranty period.

This warranty will be valid for 12 (twelve) months from the delivery of goods to the original purchaser.

In case the customer is not in a position to return the defective part to the manufacturer, the manufacturer cannot be held responsible for any cost due for repair or replacement of any part of the machine, he will only supply the part(s) required for the repair and/or replacement.

The warranty is null and void when it is evident that the machine has been improperly used or repaired or however repaired without authorization.

SITREX undertakes no responsibility for any obligation or agreement reached by any Sitrex employers, agents or dealers, which are not in compliance with the above warranty. The manufacturer cannot be held responsible for the consequent damages. This warranty substitutes any other warranty, express or implied, and any other manufacturer's obligation.

CAUTION FOR USE

It could be dangerous for people who are not familiar with this type of machine to use the rake, particularly when kids are there during the assembly or operation on field. We therefore recommend the use of the rake only to those people who are very familiar with the machine and the safety precautions.

ASSEMBLY SOLUTIONS

Sitrex rakes are easily convertible into different sizes, as almost all parts are standard and interchangeable on all sizes (wheel arms, wheels - etc.). With a special frame it is possible to attach together two RP/4-RP/5-RP/6 rakes - R.H. and L.H. - and convert them into a V-rake.

Here are the advantages

- 1) Having a R.H. RP/4 rake or a R.H. RP/5 rake or a R.H. RP/6 rake you can convert them into a L.H. RP/4 or L.H. RP/5 or L.H. RP/6 rake by replacing all wheel arms marked RIGHT with those marked LEFT.
- 2) Having a R.H. RP/4 rake you can convert it into a RP/8 V-rake by attaching a L.H. RP/4 rake and the relevant frame. To get one RP/10 V-rake from two RP/5 rake the procedure is still the same. To get one RP/12 V-rake from two RP/6 rake the procedure is still the same.
- 3) You could also use your V-rake as two single ones, L.H. or R.H. rake, according to your requirements.

SPECIFICATIONS

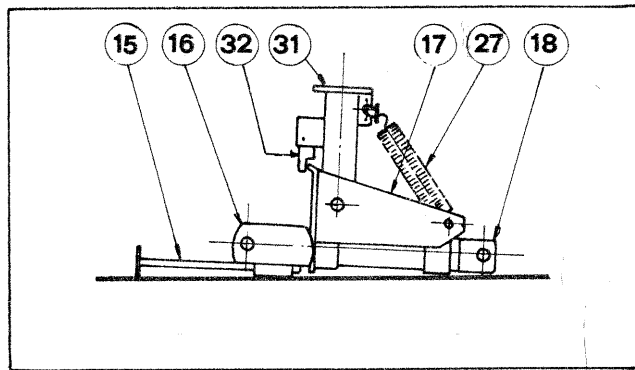
| MODELS | RP/4 | RP/5 | RP/6 | RP/8 | RP/10 | RP/12 |
|-------------------------------------|---------------|-----------------|----------------|---------------|----------------|----------------|
| Weight | 180Kg/396lbs | 200Kg/440lbs | 250Kg/551lbs | 460Kg/1013lbs | 520Kg/1146lbs | 620Kg/1366lbs |
| Number of wheels | 4 | 5 | 6 | 8 | 10 | 12 |
| Number of tines on each wheel | 40 | 40 | 40 | 40 | 40 | 40 |
| Weel diam. | 1,4 m / 55" | 1,4 m / 55" | 1,4 m / 55" | 1,4 m / 55" | 1,4 m / 55" | 1,4 m / 55" |
| Raking working width | 2,6 m / 8' 6" | 3,5 m / 11' 6" | 4,1 m / 13' 6" | 5,5 / 18' 1" | 7,5 m / 24' 7" | 8,7 m / 28' 6" |
| Turning and spreading working width | 2,9 m / 9' 6" | 3,9 m / 12' 10" | 4,4 m / 14' 5" | 6,1 / 20" | 8,7 m / 28' 7" | 10 m / 32' 10" |
| Transport width | 2,2 m / 7' 3" | 2,3 m 7' 6" | 2,3 m / 7' 6" | 3,6 m 11' 10" | 4,7 m / 15' 5" | 4,7 m / 15' 5" |
| Working speed | 22 kmh/14mph | 22 kmh/14mph | 22 kmh/14mph | 22 kmh/14mph | 22 kmh/14mph | 22 kmh/14mph |
| KW/HP required min. | 22 Kw / 30 HP | 22 Kw / 30 HP | 22 Kw / 30 HP | 30 Kw / 40 HP | 30 Kw / 40 HP | 30 Kw / 40 HP |

RP/4-RP/5 AND RP/6 RAKE ASSEMBLY INSTRUCTIONS

To save room in the container we supply the rakes partly knocked down. Here below please find assembly instructions. For part numbers please refer to the enclosed parts breakdown.

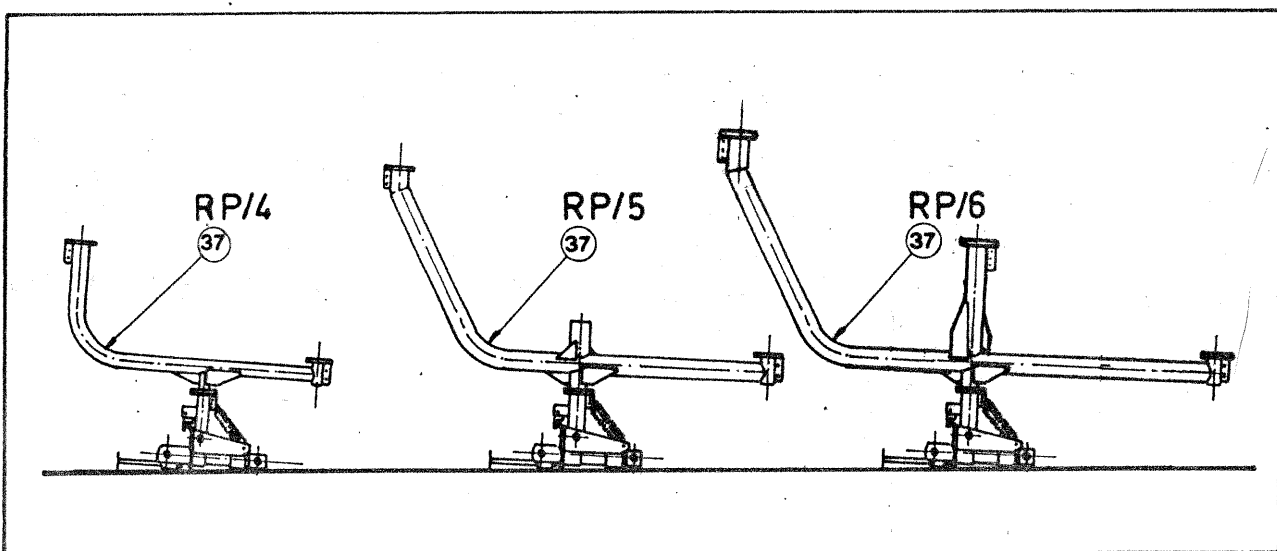
ASSEMBLING

- a) Position the parking stand (15) in its housing and lock it with the pin (13). Next, lay the primary structure (supplied assembled) on the ground with the swinging pipe (31) upwards (pict. 1).



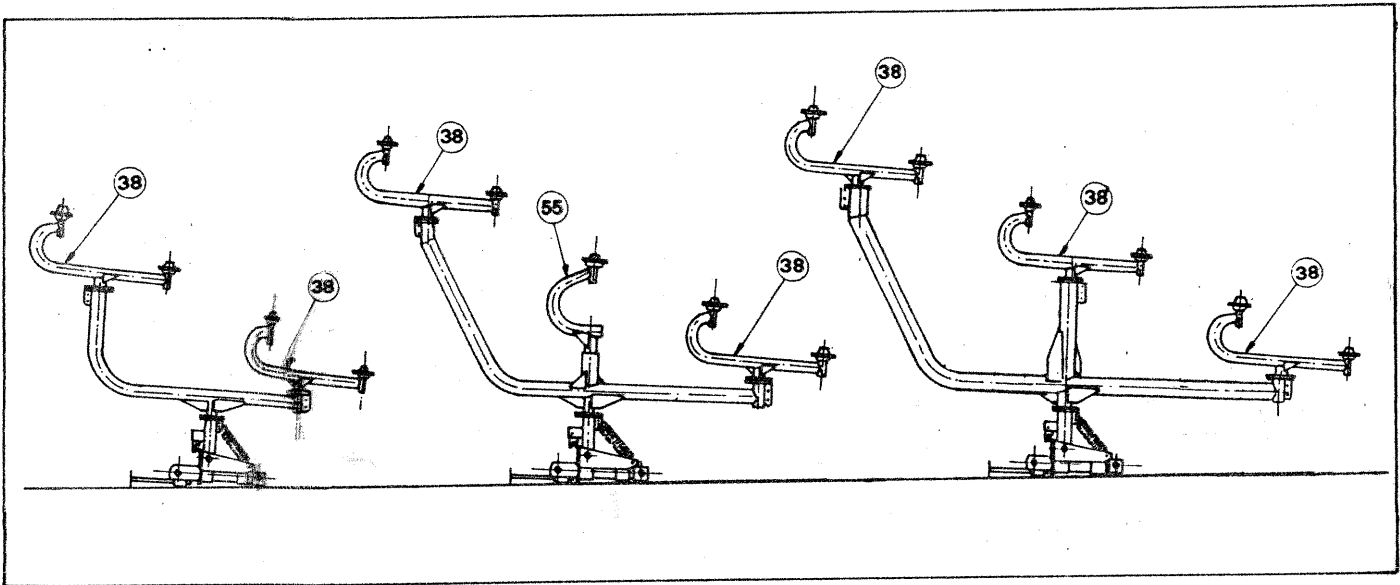
Pict. 1

- b) Slide the main pipe (37) into the swinging pipe (31) and retain with the supplied lever (33) and pin (36), so that it is on axle with the three point hitch (pict. 2).



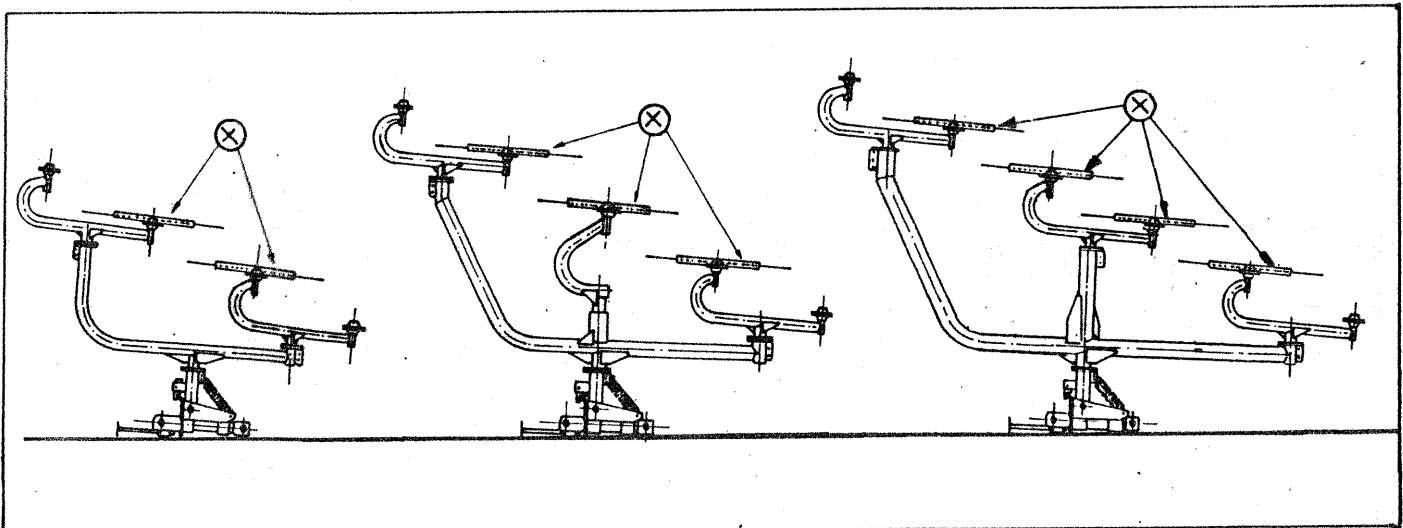
Pict. 2

- c) Attach the wheel arms (38) and lock them to the main pipe (37) with pins (36), so that they are on axle with the main pipe (37). For the RP/5 rake, attach also the central arm (55) to the main pipe (37) and retain with bolts (53-54-30) (pict.3).



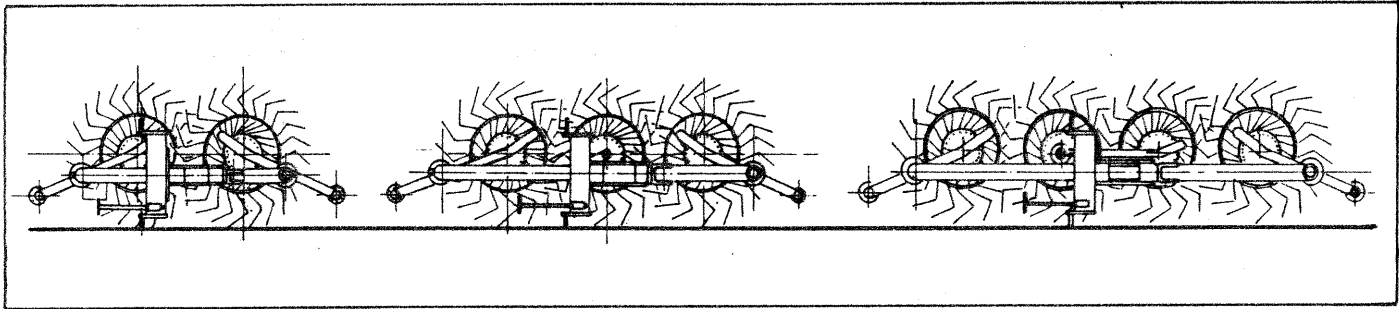
Pict. 3

- d) Attach the two central wheels (RP/4) or the three central wheels (RP/5) or the four central wheels (RP/6) to the supplied arm flanges (38-55) and bolt them with the supplied bolts (pict.4). when bolting the wheels (x) check that the tine clamps (48) are turned toward the hub.



Pict. 4

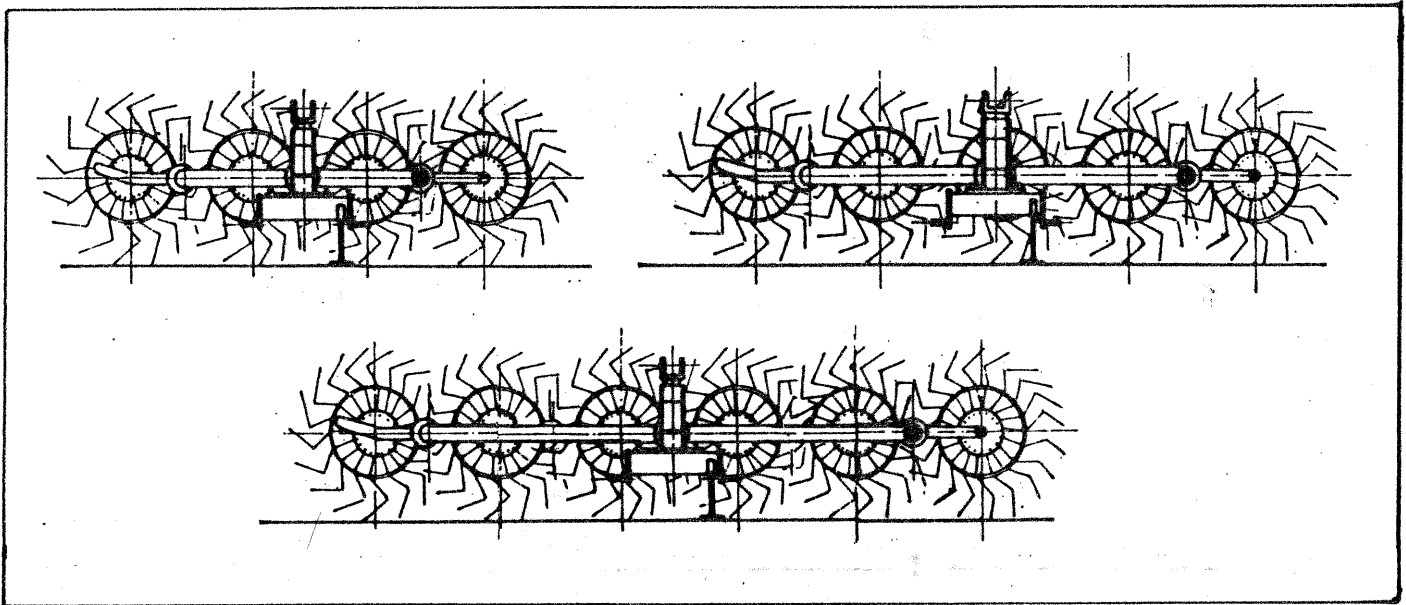
- e) Lift the wheels (x) from the ground until they are in the working position (pict. 5).



Pict. 5

- f) Unlock the primary structure with the supplied lever (33) and pin (36), turn it by 90 degrees and lock it again with the same pin. Now the rake is properly positioned on the ground and you only have to attach the remaining wheels as explained above.

The rake is now fully assembled and ready to be mounted to the tractor (pict. 6)



Pict. 6

IMPORTANT

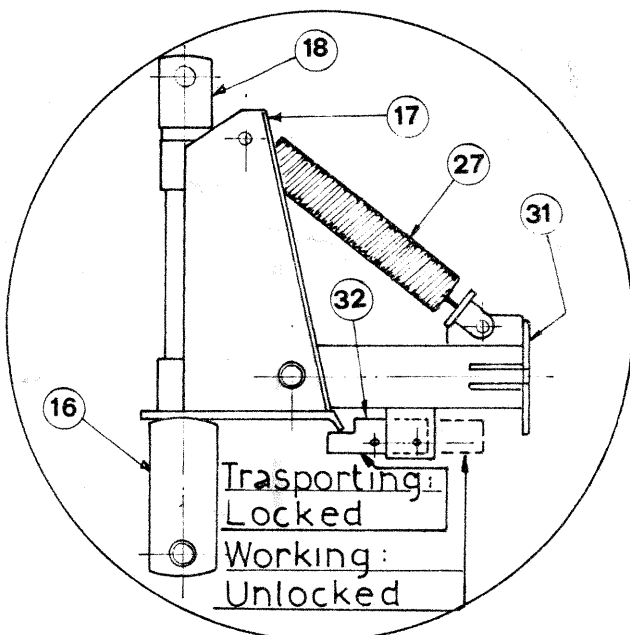
Above are the instructions for the R.H. rake assembly. Please refer to the above instructions also for the L.H. rake assembly. Most parts are interchangeable for both rakes, only the specific parts are marked RIGHT or LEFT.

MOUNTING OF RP/4 AND RP/5 RAKE TO TRACTOR

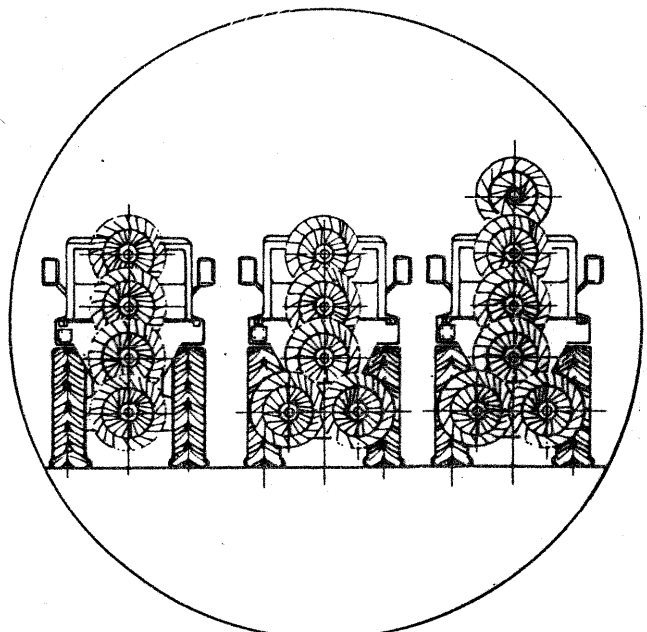
When the rake is ready to be mounted to the tractor (pict. 6) attach the lifting arms to the pins on both sides of the primary structure (16).

Next, attach the three point arm to the cap (18) of the primary structure with the pin. Now lift the rake to its highest setting and for transport lock with the pin (32) for no rake floating (pict. 7).

Retain the part (17) to the crossbar (16) with the pin (19) into hole 1 (pict. 15) of the above said crossbar. Now turn the main pipe (37) and bring the rake to the vertical position for transport (pict. 8).



Pict. 7



(Pict. 8)

VERY IMPORTANT

Never operate the rake with the pin (32) in the locked position. The locked position is for transport only (pict. 7).

RP/8-RP/10 AND RP/12 V-RAKE ASSEMBLY INSTRUCTIONS

RP/8 and RP/10 and RP/12 V-rakes are made as follows:

- no 1 main frame (1) complete of hitches (4-12)
- no 1 R.H. RP/4 or RP/5 or RP/6 rake, duly assembled as above.
- no 1 L.H. RP/4 or RP/5 or RP/6 rake, duly assembled as above.

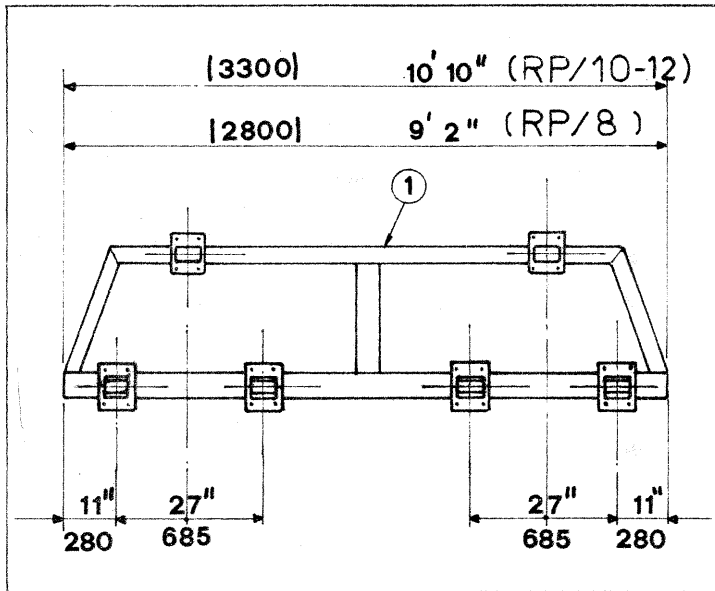
IMPORTANT

On the R.H. and L.H. RP/4 and RP/5 and RP/6 rakes only the wheel arms and the wheels are specific, all other parts are interchangeable for both rakes. The specific parts are marked RIGHT (for the R.H. rake) and LEFT (for the L.H. rake).

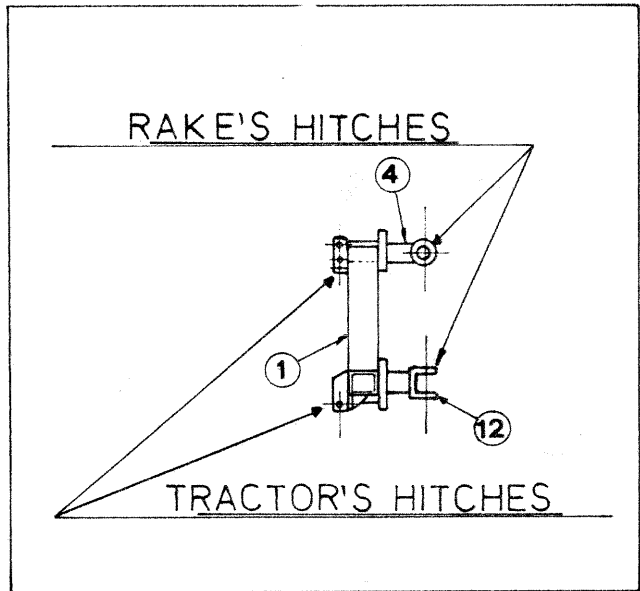
ASSEMBLING

Attach the hitches (4-12) and relevant counterplates (5) to both ends of the main frame (1) - in the position show in picture 9 - with bolts (6-7-8)

Attach hitches (4-12) to the opposite side of the tractor's hitches welded on the frame (1) (pict. 10).

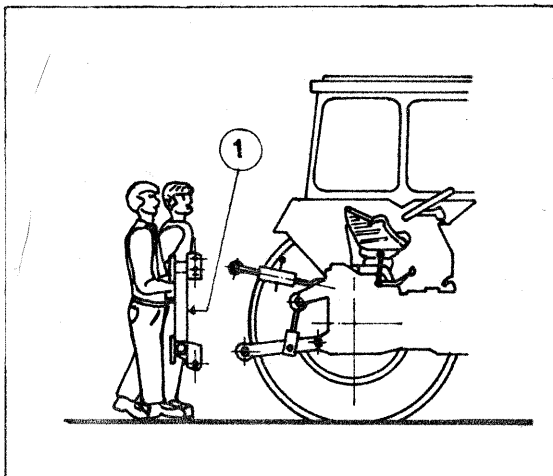


(Pict. 9)

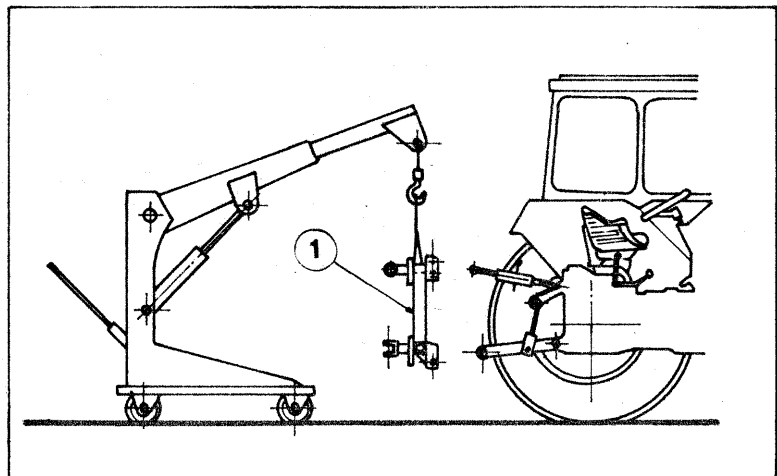


(Pict. 10)

Next, manually (pict. 11) or with a crane (pict. 12) lift the main frame (1) and bolt it to the tractor's lifting arms.



(Pict. 11)



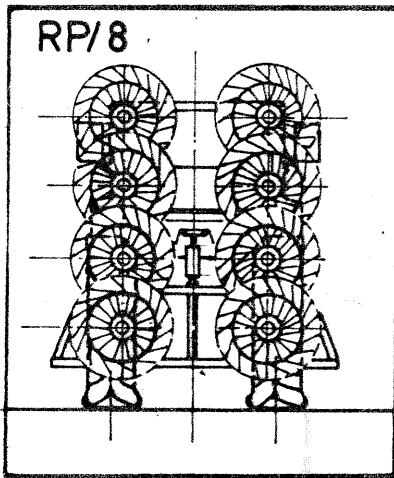
(Pict. 12)

ATTACHING THE RAKES TO THE FRAME

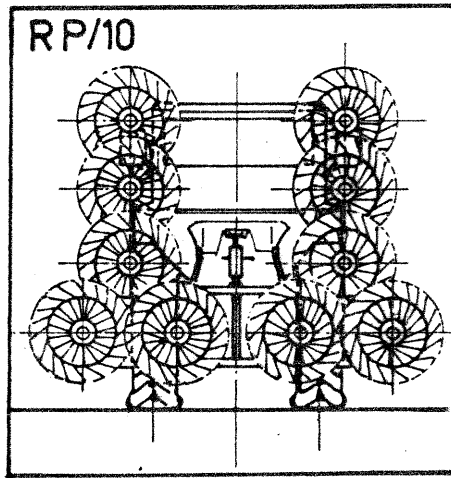
Attach hitches (12) of frame (1) to the lateral pins welded on the primary structure (16) of rake with the pins (11) and the split pins (10). Attach the upper hitch (4) to the cap (18) with the pin (9) and the split pin (10).

IMPORTANT

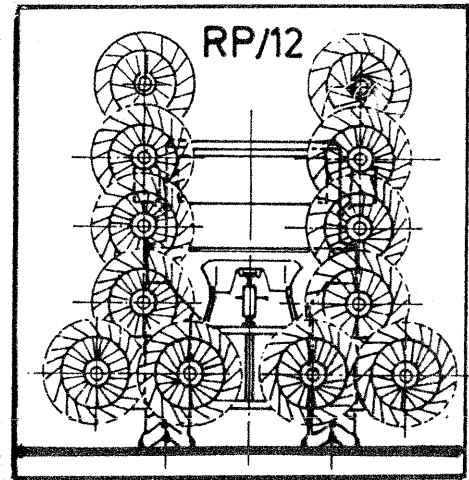
For the V-rake transport please refer to the RP/4 and RP/5 and RP/6 rake transport. Pictures 13 and 14 below show the transport position of RP/8 and RP/10 and RP/12 V-rakes.



13



Pict. 13

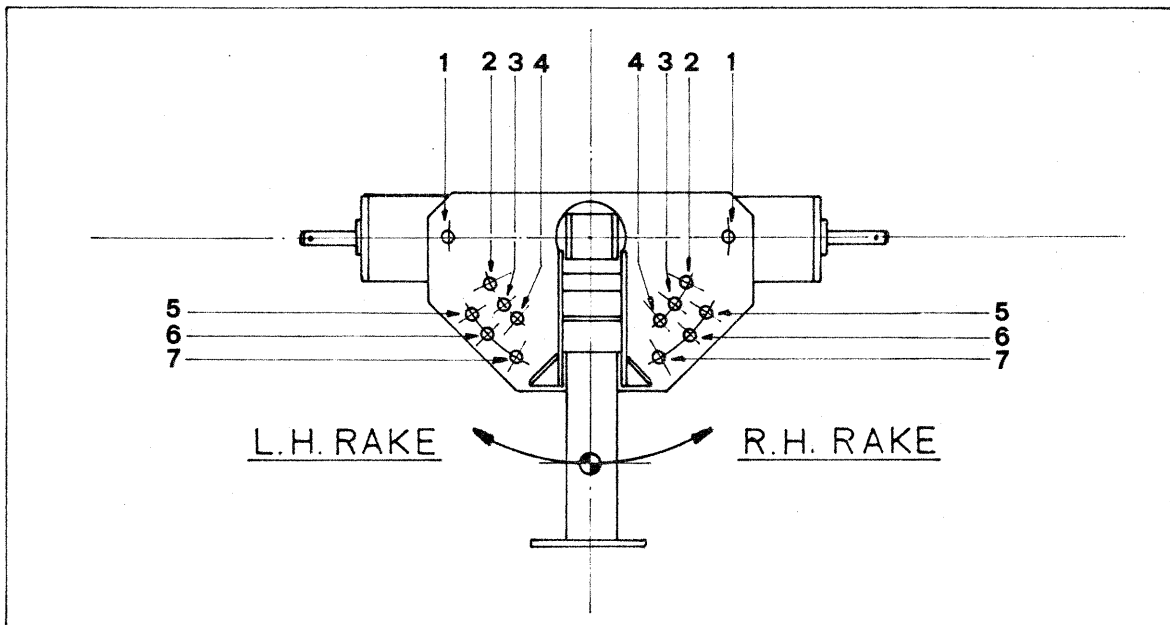


Pict. 14

ON THE FIELD

Before operating the rake and after you have reached the field, unlock pin (32) (pict. 7 and relevants notes). This will enable the rake to float independent of the main frame.

Next, adjust the rake working angle by positioning the pin (19) into the holes 2 to 7 (pict. 15). Hole 1 is for transport only.



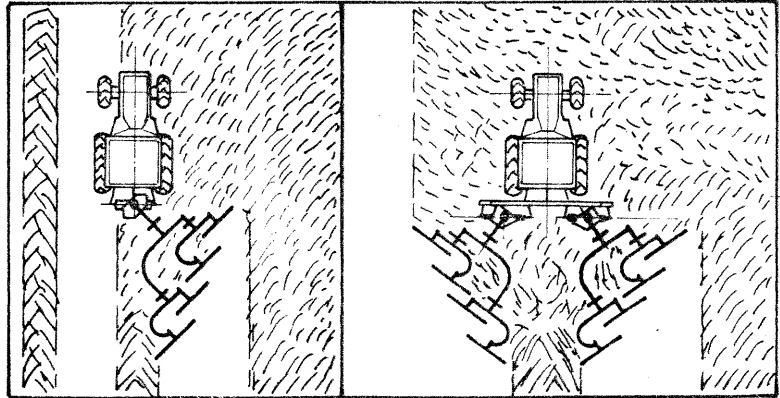
Pict. 15

The rake is suitable for:

1) RAKING (pict. 16)

Turn the main pipe (37) with the bend to the left.

Turn the wheel arms (38) (on RP/5 rake turn the wheel arm 55 as well) with the bend to the left.

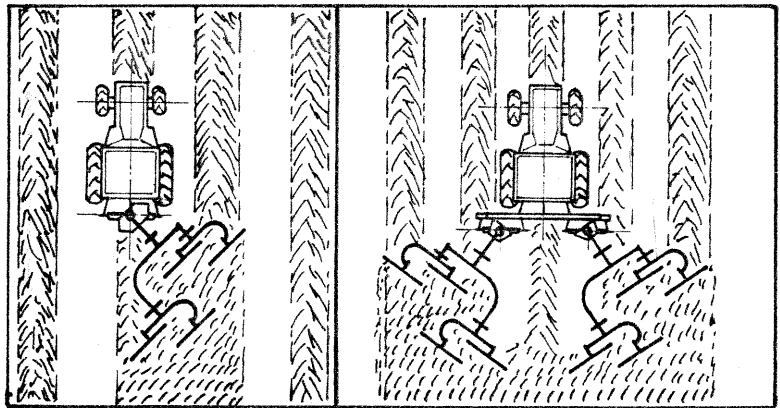


Pict. 16

2) SPREADING (pict. 17)

Turn the main pipe (37) with the bend to the left.

Turn the wheel arms (38) (on the RP/5 rake turn the wheel arm 55 as well) with the bend to the right.

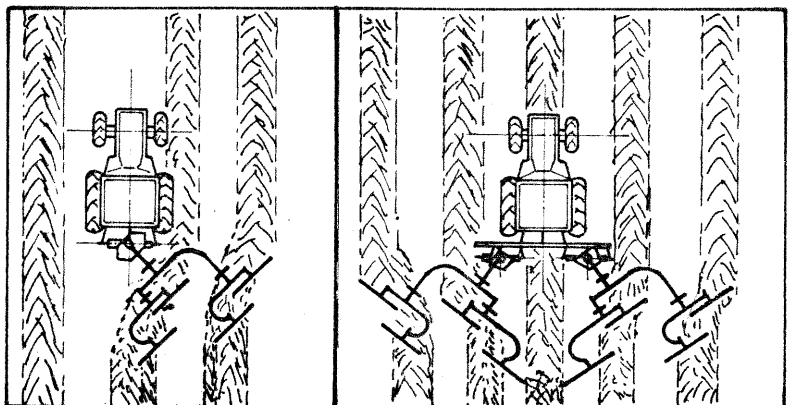


Pict. 17

3) TURNING (pict. 18)

Turn the main pipe (37) with the bend to the right.

Turn the wheel arms (38) (on RP/5 rake turn the wheel arm 55 as well) with the bend to the left.



Pict. 18

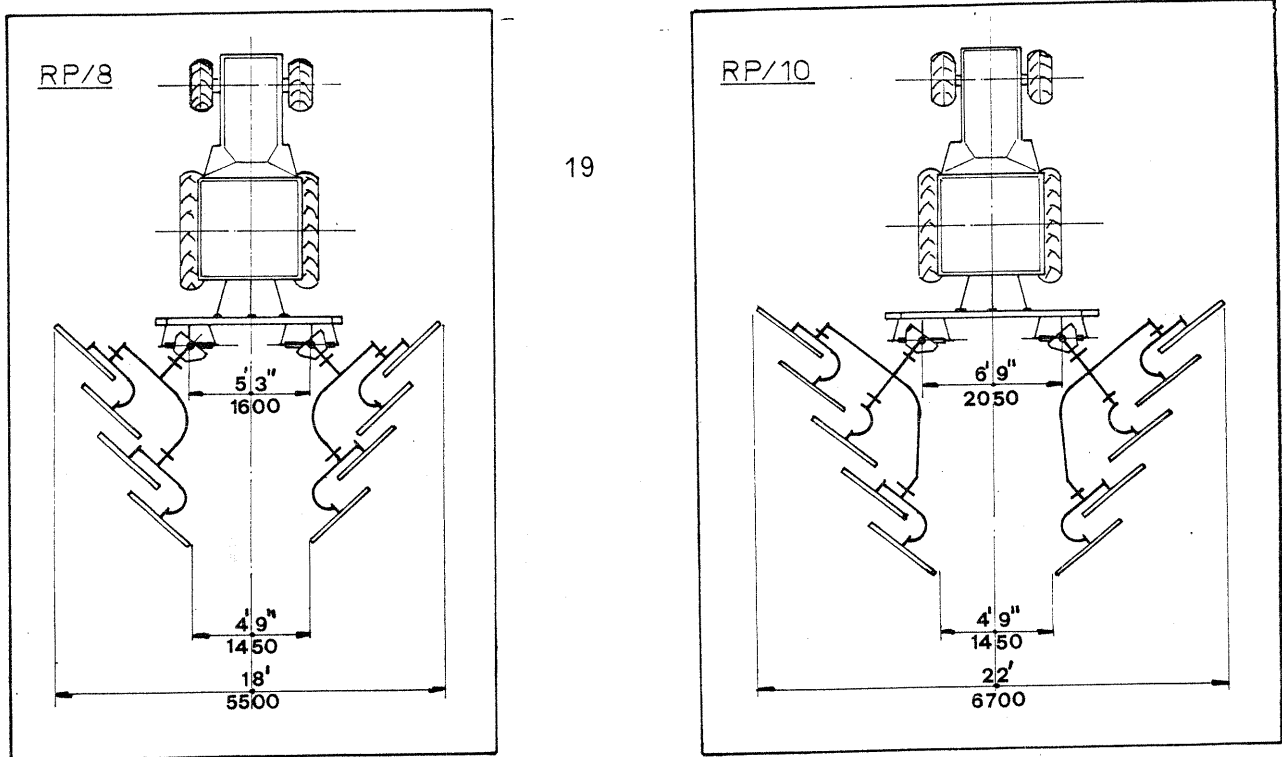
IMPORTANT

Above we have described how to set a R.H. rake for the different operations. If you need to set a L.H. rake for the above operations, please refer to pictures 16-17 and 18 of V-rakes.

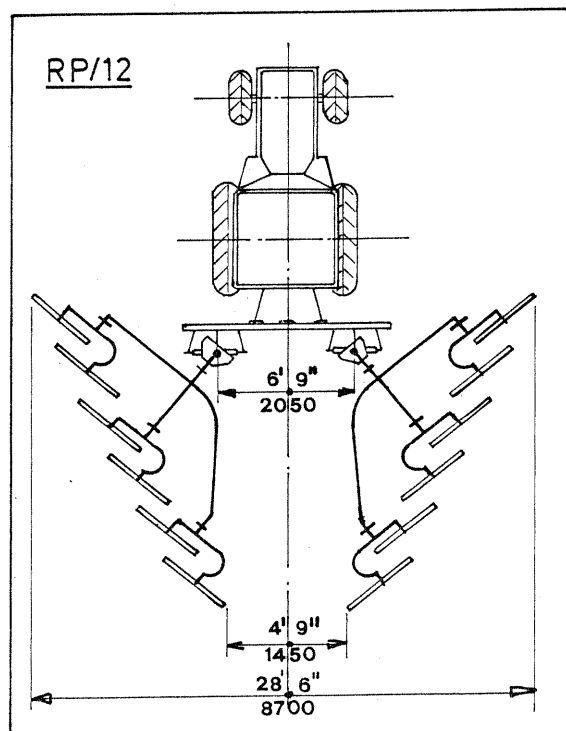
ON THE FIELD WITH RP/8-RP/10 AND RP/12 V-RAKES

RP/8 and RP/10 and RP/12 V-rakes are properly designed for windrowing, as ideal implement to complement the big balers. Slide the RP/4 or RP/5 or RP/6 rakes on the frame (1) to get different working widths.

Below (pict. 19-20) the ideal positioning of the rake for a swath suitable for a 5' pick-up baler.



20





FEATURES

Sitrex hayrakes are basically made of a primary structure of bent steel pipes, which make the implement particularly sturdy and flexible. Tines are also very flexible, many are the possible adjustments of the rake, and the implement can work fast and successfully even on slopes or on stony and rough soils.

The wheel hubs are made of pressed steel and are equipped with taper roller bearings, protected with a dust cover, so that the wheels can properly turn.

MAINTENANCE

On Sitrex rakes no maintenance is required. As a matter of fact no maintenance is required for all gearings, wheel hubs (equipped with 1st quality taper roller bearings and protected with a dust cover) and all setting operations.

No special tools are therefore required for servicing.

However, when the season is over, we recommend to clean the implement, to protect it from rust by oiling and store it until next season.

IMPORTANT

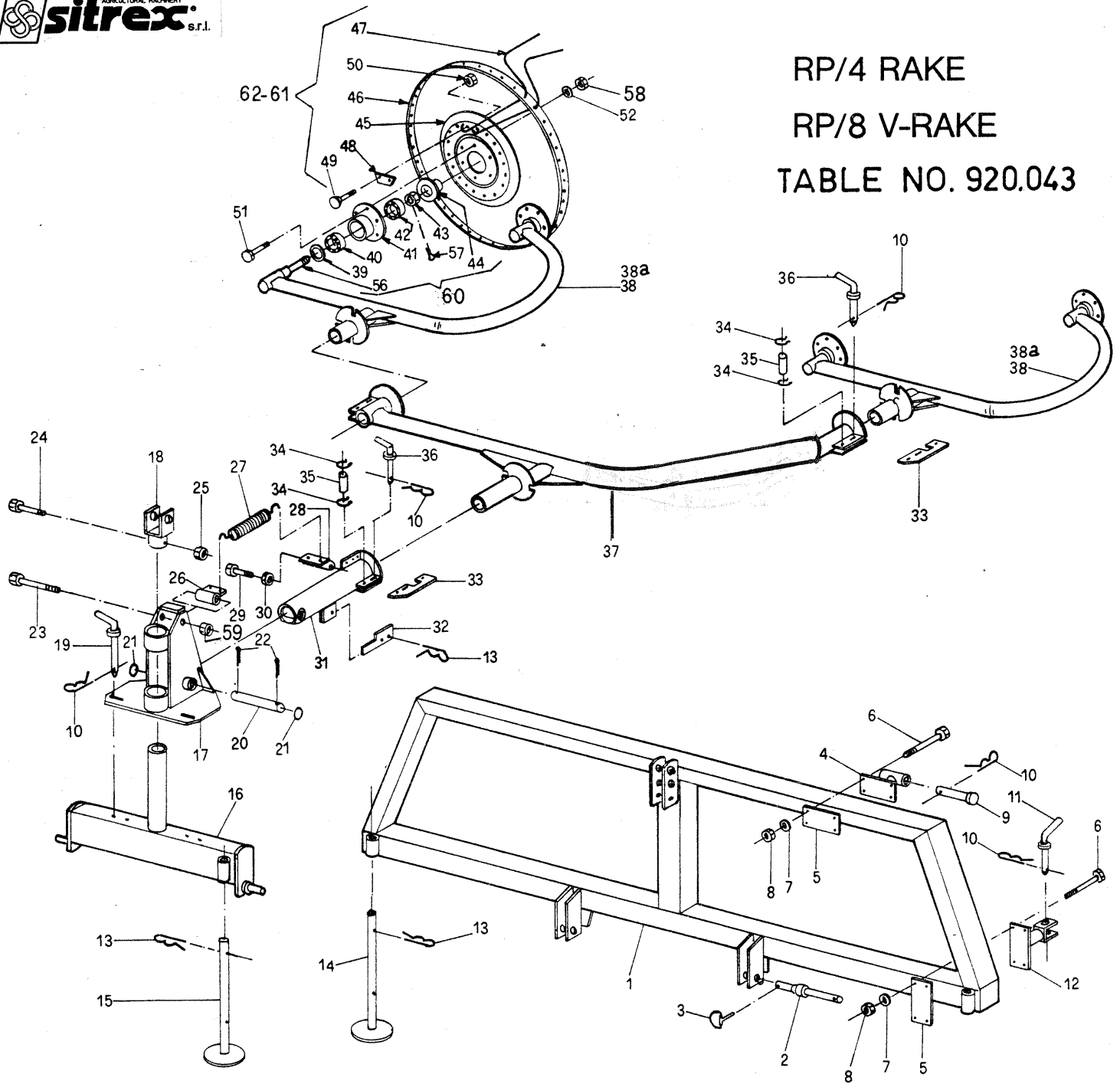
Every Sitrex rake is provided with an identification label, as follows:

| | |
|---|--------------------------------|
|  | sitrex [®] |
| 06018 TRESTINA - PERUGIA - ITALY | |
| TYPE <input type="text"/> | SERIAL N° <input type="text"/> |
| PATENTED | |

We recommend the use of SITREX original spare parts only, to get your implement working well for a long time. By ordering spare parts please always refer to the parts breakdown provided with this manual.

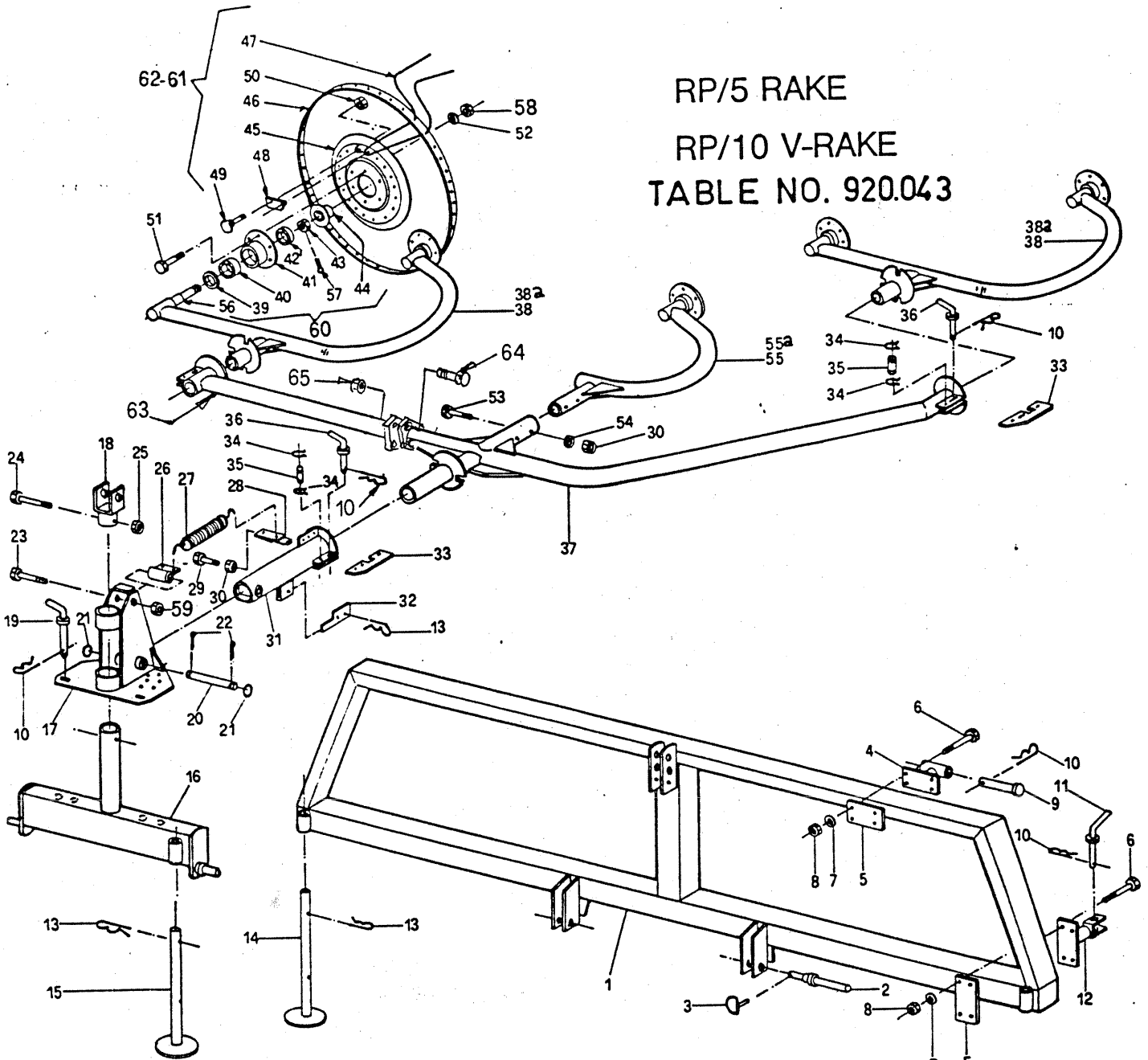
| TROUBLES | CAUSES | REMEDIES |
|--------------------------------------|--|--|
| 1) Wheel does not unload hay | 1) New tine, too much paint on it. 2) Mud on tine point due to moist soil. | 1) Have the wheels be turning on gravelly soil until the tine is clean again. 2) The wheels are too close to the ground |
| 2) Tine failure | 1) Going backwards with wheels not lifted. 2) Too much pressure on the wheels. 3) Tine rusted. | 1) Lift the wheels before going backwards. 2) Lightly lift the rake. 3) Protect it by oiling. |
| 3) The rake does not collect the hay | 1) The wheel is too much inclined to the ground. 2) Tine worn out. | 1) By setting the 3rd point arm, bring the wheel vertical to the ground. 2) Replace it. We recommend to replace all tines for uniform height. |
| 4) Too much floating of wheels. | 1) Wheels too far from ground. | 1) Lightly lower the rake. |
| 5) Bent tine | 1) Going backwards with the wheels not lifted. 2) Too much speed on rough soil. 3) Going across deep and narrow ditches or prominences. 4) Too much weight on the wheels. | 1) Lift the wheels when going backwards 2) Reduce speed. 3) Reduce speed. 4) Lightly lift the rake. |

RP/4 RAKE
 RP/8 V-RAKE
 TABLE NO. 920.043



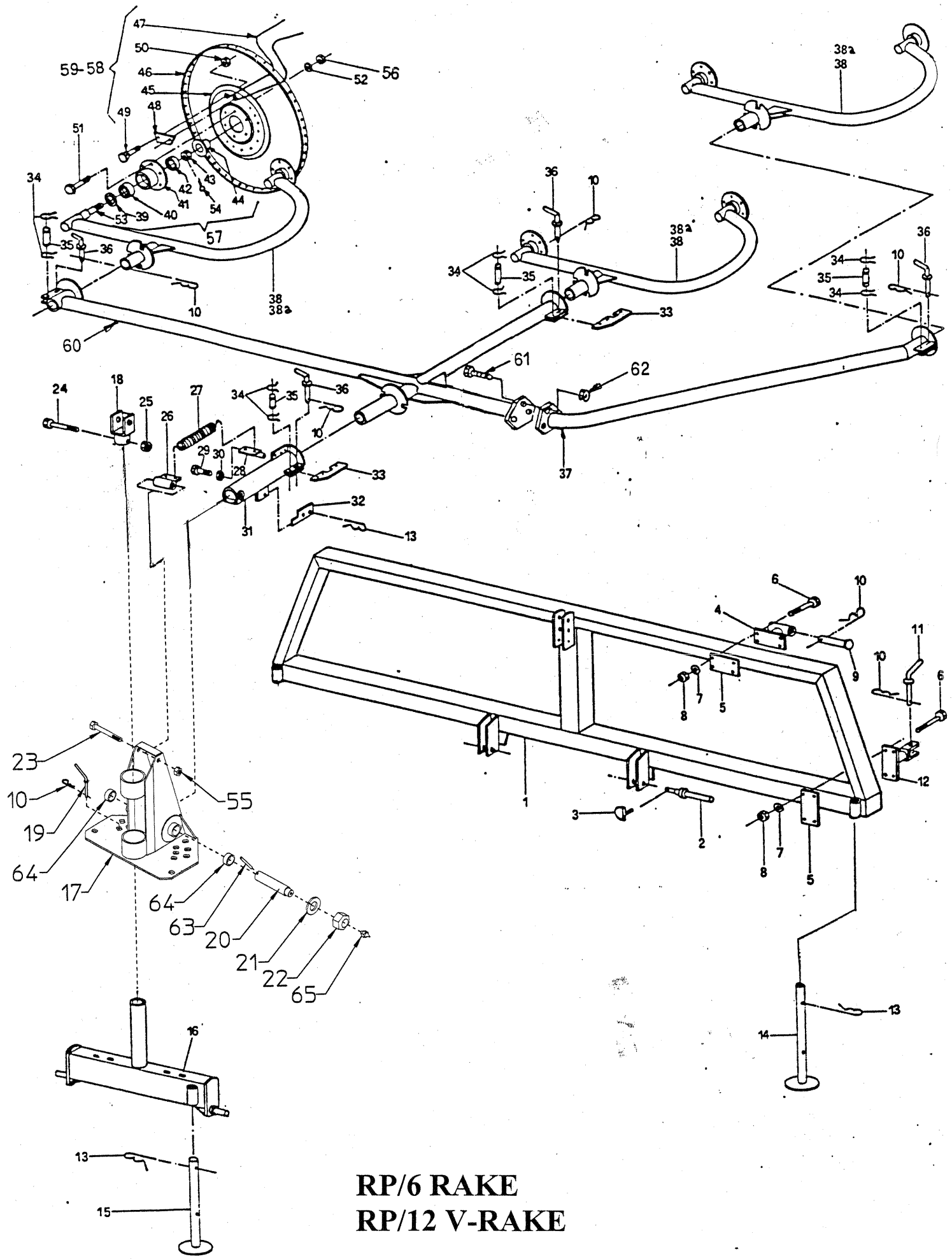
| TABLE NO.920.043 | | | | RP/4-RP/5-RP/6-RP/8-RP/10-RP/12 | | | |
|------------------|------|---------|-------------|---------------------------------|---|---------|----------------------|
| ITEM | Q.ty | PART NO | DESCRIPTION | | | | |
| | | | | 16 | 1 | 210.369 | BASE |
| | | | | 17 | 1 | 200.064 | SUPPORT |
| | | | | 18 | 1 | 200.065 | CAP |
| | | | | 19 | 1 | 200.035 | PIN |
| | | | | 20 | 1 | 200.067 | PIN |
| | | | | 21 | 2 | 600.021 | WASHER |
| | | | | 22 | 2 | 600.022 | SPLIT PIN |
| | | | | 23 | 1 | 610.018 | SCREW |
| | | | | 24 | 1 | 600.003 | SCREW |
| | | | | 25 | 1 | 600.051 | NUT |
| | | | | 26 | 1 | 200.068 | UPPER LINKAGE,SPRING |
| | | | | 27 | 2 | 200.069 | SPRING |
| | | | | 28 | 1 | 200.070 | LOWER LINKAGE,SPRING |
| | | | | 29 | 1 | 600.004 | SCREW |
| | | | | 30 | 3 | 600.052 | NUT |
| | | | | 31 | 1 | 200.071 | SWINGING PIPE |
| | | | | 32 | 1 | 200.072 | LOCK DEVICE |
| | | | | 33 | 3 | 200.073 | LEVER |
| | | | | 14 | 2 | 200.061 | PARKING STAND,FRAME |
| | | | | 15 | 1 | 200.062 | PARKING STAND,BASE |
| | | | | 34 | 6 | 600.023 | SNAP RING |

RP/5 RAKE
 RP/10 V-RAKE
 TABLE NO. 920.043



| | | | |
|-----|---|---------|--------------------------|
| 35 | 3 | 200.074 | PIN |
| 36 | 3 | 200.075 | PIN |
| 37 | 1 | 210.571 | RP/4 MAIN PIPE |
| 37 | 1 | 210.199 | RP/5 MAIN PIPE |
| 38 | 2 | 200.077 | WHEEL ARM,RH |
| 38a | 2 | 200.078 | WHEEL ARM,LH |
| 39 | - | 600.011 | DUST COVER |
| 40 | - | 600.012 | BEARING |
| 41 | - | 600.013 | WHEEL HUB |
| 42 | - | 600.014 | BEARING |
| 43 | - | 600.015 | SELF LOCKING NUT |
| 44 | - | 600.016 | SAFETY CAP |
| 45 | - | 200.010 | FLANGE |
| 46 | - | 200.009 | RIM |
| 47 | - | 210.620 | TINE DIA.0,256" (6,5 mm) |
| 47 | - | 210.621 | TINE DIA.0,276" (7 mm) |
| 48 | - | 200.012 | TINE CLAMP |
| 49 | - | 600.005 | SCREW |
| 50 | - | 600.029 | NUT |
| 51 | - | 600.006 | SCREW |
| 52 | - | 600.024 | SPRING WASHER |

| | | | | |
|-----|---|---------|---------------------------------|----------|
| 53 | 2 | 600.007 | SCREW | |
| 54 | 2 | 600.018 | SPRING WASHER | |
| 55 | 1 | 200.079 | ARM,RH | |
| 55a | 1 | 200.080 | ARM,LH | |
| 56 | - | 205.277 | PIN | |
| 57 | - | 600.301 | SPLIT PIN | |
| 58 | - | 600.010 | NUT | |
| 59 | - | 600.075 | NUT | |
| 60 | - | 205.041 | HUB ASSY | |
| 61 | - | 210.180 | WHEEL ASSY,RH (TINE DIA 0,276") | (7 mm) |
| 61 | - | 210.181 | WHEEL ASSY,LH (TINE DIA 0,276") | (7 mm) |
| 62 | - | 210.182 | WHEEL ASSY,RH (TINE DIA 0,256") | (6,5 mm) |
| 62 | - | 210.183 | WHEEL ASSY,LH (TINE DIA 0,256") | (6,5 mm) |
| 63 | 1 | 210.198 | RP/5 PIPE | |
| 64 | 3 | 600.310 | SCREW | RP/5 |
| 65 | 3 | 600.075 | NUT | RP/5 |

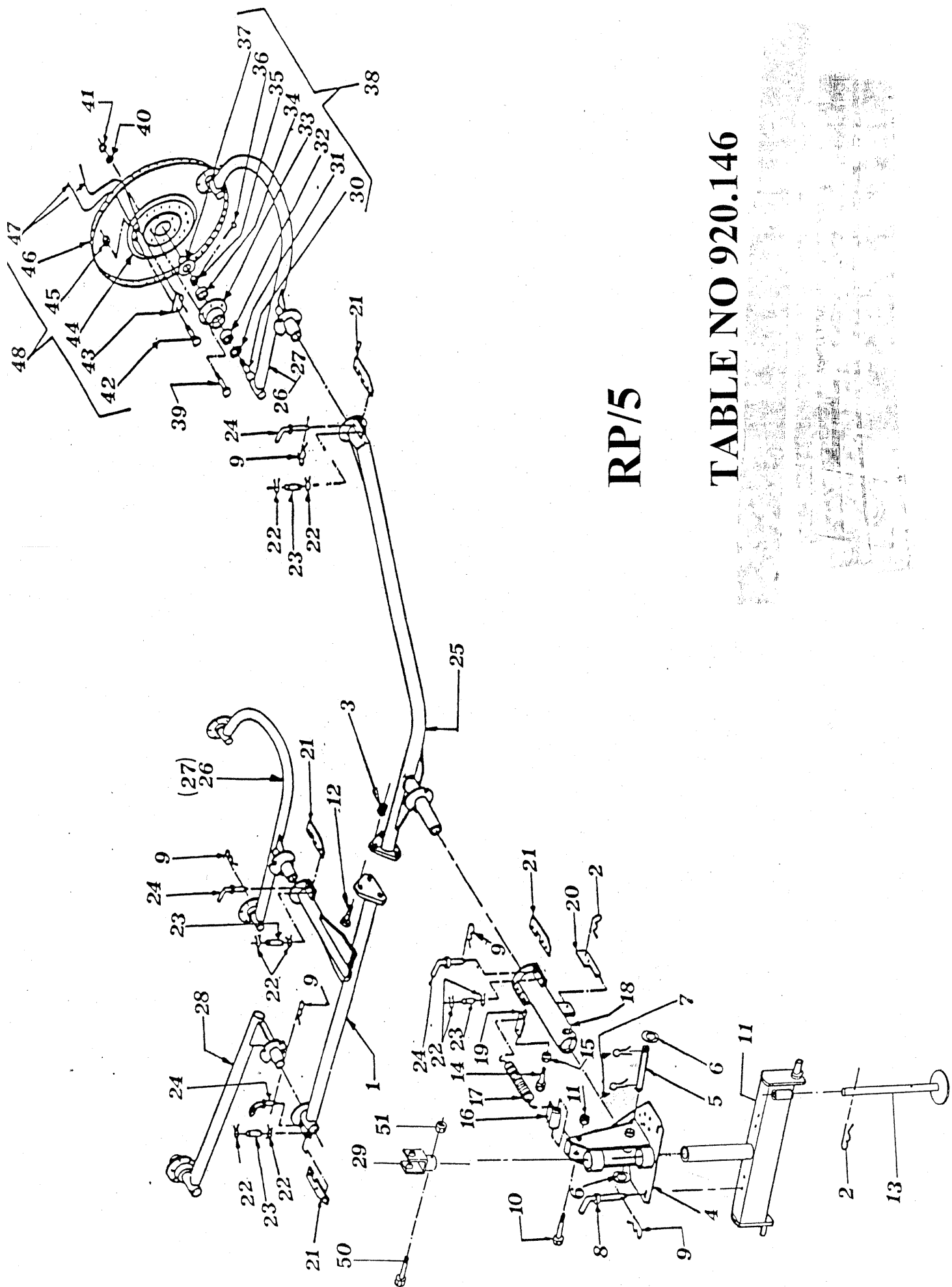


RP/6 RAKE
RP/12 V-RAKE

TABLE NO 920.248

TABLE PART NO 920.248

| ITEM | Q.ty | PART NO | DESCRIPTION | NOTE |
|------|----------|---------|------------------------------------|------|
| 1 | 1 | 200.081 | FRAME | |
| 2 | 2 | 200.047 | PIN | |
| 3 | 2 | 600.017 | SPLIT PIN | |
| 4 | 2 | 200.056 | UPPER LINKAGE | |
| 5 | 6 | 200.057 | COUNTERPLATE | |
| 6 | 24 | 600.001 | SCREW M12x140 | |
| 7 | 24 | 600.018 | SPRING WASHER ϕ 13 DIN 127B | |
| 8 | 24 | 600.008 | NUT M12 | |
| 9 | 2 | 200.058 | PIN | |
| 10 | 11 | 600.019 | SPLIT PIN | |
| 11 | 4 | 200.059 | PIN | |
| 12 | 4 | 200.060 | LOWER LINKAGE | |
| 13 | 4 | 600.020 | SPLIT PIN | |
| 14 | 2 | 200.061 | PARKING STAND, FRAME | |
| 15 | 1(2) | 230.163 | PARKING STAND, BASE | |
| 16 | 1(2) | 210.376 | BASE | |
| 17 | 1(2) | 230.202 | SUPPORT | |
| 18 | 1(2) | 200.094 | CAP | |
| 19 | 1(2) | 200.035 | PIN | |
| 20 | 1(2) | 230.203 | PIN | |
| 21 | 1(2) | 600.245 | WAHER ϕ 25 | |
| 22 | 1(2) | 600.725 | NUT M24 | |
| 23 | 1(2) | 610.018 | SCREW M14x120 DIN 931 8.8 | |
| 24 | 1(2) | 600.003 | SCREW M14x100 DIN 931 8.8 | |
| 25 | 1(2) | 600.051 | NUT M14 | |
| 26 | 1(2) | 200.121 | UPPER LINKAGE, SPRING | |
| 27 | 2(4) | 300.015 | SPRING | |
| 28 | 1(2) | 200.122 | LOWER LINKAGE, SPRING | |
| 29 | 1(2) | 600.004 | SCREW M12x30 DIN 933 8.8 | |
| 30 | 1(2) | 600.052 | NUT M12 DIN 934 | |
| 31 | 1(2) | 230.171 | SWINGING PIPE | |
| 32 | 1(2) | 200.072 | LOCK DEVICE | |
| 33 | 4(8) | 200.073 | LEVER | |
| 34 | 8(16) | 600.023 | SNAP RING E 15 DIN 471 | |
| 35 | 4(8) | 200.074 | PIN | |
| 36 | 4(8) | 200.075 | PIN | |
| 37 | 1(2) | 210.612 | MAIN PIPE | |
| 38 | 3(6) | 200.077 | RH WHEEL ARM | |
| 38a | 3(6) | 200.078 | LH WHEEL ARM | |
| 39 | 6(12) | 600.011 | DUST COVER | |
| 40 | 6(12) | 600.012 | BEARING 30205 | |
| 41 | 6(12) | 600.013 | WHEEL HUB | |
| 42 | 6(12) | 600.014 | BEARING 30204 | |
| 43 | 6(12) | 600.015 | NUT M18x1,5 | |
| 44 | 6(12) | 600.016 | SAFETY CAP | |
| 45 | 6(12) | 200.010 | FLANGE | |
| 46 | 6(12) | 200.009 | RIM | |
| 47 | 240(480) | 210.620 | TINE ϕ 0,256"-6,5 mm | |
| 47 | 240(480) | 210.621 | TINE ϕ 0,276"-7 mm | |
| 48 | 60(120) | 200.012 | TINE CLAMP | |
| 49 | 120(240) | 600.005 | SCREW M10x25 DIN 603 6.8 | |
| 50 | 120(240) | 600.029 | NUT M10 DIN 980 | |
| 51 | 60(120) | 600.006 | SCREW M10x25 DIN 933 8.8 | |
| 52 | 60(120) | 600.024 | SPRING WASHER ϕ 10,5 DIN 127B | |
| 53 | 6(12) | 205.277 | PIN | |
| 54 | 6(12) | 600.301 | SPLIT PIN | |
| 55 | 1(2) | 600.075 | NUT M14 DIN 980 | |
| 56 | 60(120) | 600.010 | NUT M10 DIN 934 | |
| 57 | 6(12) | 205.041 | HUB ASSY | |
| 58 | 3(6) | 210.180 | RH WHEEL ASSY (TINE ϕ 0,276") | |
| 58 | 3(6) | 210.181 | LH WHEEL ASSY (TINE ϕ 0,276") | |
| 59 | 3(6) | 210.182 | RH WHEEL ASSY (TINE ϕ 0,256") | |
| 59 | 3(6) | 210.183 | LH WHEEL ASSY (TINE ϕ 0,256") | |
| 60 | 1(2) | 210.613 | PIPE | |
| 61 | 3(6) | 600.310 | SCREW M14x40 DIN 933 8.8 | |
| 62 | 3(6) | 600.075 | NUT M14 DIN 980 | |
| 63 | 1(2) | 620.629 | SPRING PIN ϕ 8x55 | |
| 64 | 4(8) | 600.808 | BUSH | |
| 65 | 1(2) | 600.034 | GREASE NIPPLE M8 | |

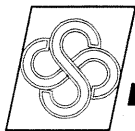


RP/5

TABLE NO 920.146

TABLE NO.920.146

| RP/5 | | | | | |
|------|------|-----------|---------------|---|------|
| ITEM | Q.ty | PART NO | DESCRIPTION | DESCRIPTION | NOTE |
| 1 | 1 | 210.575 | PIPE | PIPE | |
| 2 | 2 | 600.020 | SPLIT PIN | SPLIT PIN | |
| 3 | 3 | 600.075 | NUT | NUT M14 DIN 980 | |
| 4 | 1 | 200.064 | SUPPORT | SUPPORT | |
| 5 | 1 | 200.067 | PIN | PIN | |
| 6 | 2 | 600.021 | WASHER | WASHER D 23 DIN 125A | |
| 7 | 2 | 600.022 | SPLIT PIN | SPLIT PIN | |
| 8 | 1 | 200.222 | PIN | PIN | |
| 9 | 5 | 600.019 | SPLIT PIN | SPLIT PIN | |
| 10 | 1 | 610.018 | SCREW | SCREW M14 X120 DIN 931 8.8 | |
| 11 | 1 | 210.369 | BASE | | |
| 12 | 3 | 600.310 | SCREW | SCREW M14 X 40 DIN 933 8.8 | |
| 13 | 1 | 200.062 | PARKING STAND | | |
| 14 | 4 | 600.004 | SCREW | SCREW M12 X 30 DIN 933 8.8 | |
| 15 | 1 | 600.008 | NUT | NUT M12 DIN 934 - 8 | |
| 16 | 1 | 200.068 | UPPER LINK | UPPER LINKAGE, SPRING | |
| 17 | 2 | 200.069 | SPRING | SPRING | |
| 18 | 1 | 200.071 | SWINGING PI | SWINGING PIPE | |
| 19 | 1 | 200.070 | LOWER LINK | LOWER LINKAGE, SPRING | |
| 20 | 1 | 200.072 | LOCK DEVICE | LOCK DEVICE | |
| 21 | 4 | 200.073 | LEVER | LEVER | |
| 22 | 8 | 600.023 | SNAP RING | SNAP RING E 15 DIN 471 | |
| 23 | 4 | 200.074 | PIN | PIN | |
| 24 | 4 | 200.075 | PIN | PIN | |
| 25 | 1 | 210.576 | MAIN PIPE | MAIN PIPE | |
| 26 | 2 | 200.077 | WHEEL ARM, | WHEEL ARM, R.H. | |
| (27) | (2) | (200.078) | (WHEEL ARM | (WHEEL ARM, L.H.) | |
| 28 | 1 | 210.067 | ARM | ARM | |
| 29 | 1 | 200.065 | CAP | | |
| 30 | 5 | 205.277 | PIN | PIN | |
| 31 | 5 | 600.011 | DUST COVER | DUST COVER | |
| 32 | 5 | 600.012 | BEARING | BEARING 30205 | |
| 33 | 5 | 600.013 | WHEEL HUB | WHEEL HUB | |
| 34 | 5 | 600.014 | BEARING | BEARING 30204 | |
| 35 | 5 | 600.015 | SELF-LOCKIN | SELF-LOCKING NUT M18X1,5 - 6 | |
| 36 | 5 | 600.301 | SPLIT PIN | SPLIT PIN | |
| 37 | 5 | 600.016 | SAFETY CAP | SAFETY CAP | |
| 38 | 5 | 205.041 | HUB ASSY. | HUB ASSY. | |
| 39 | 30 | 600.006 | SCREW | SCREW M10 X 25 DIN 933 8.8 | |
| 40 | 30 | 600.024 | SPRING WAS | SPRING WASHER D 10.5 | |
| 41 | 30 | 600.010 | NUT | NUT M10 DIN 934 - 8 | |
| 42 | 100 | 600.005 | SCREW | SCREW | |
| 43 | 50 | 200.012 | TINE CLAMP | TINE CLAMP | |
| 44 | 5 | 200.010 | FLANGE | FLANGE | |
| 45 | 100 | 600.029 | NUT | NUT M10 DIN 980 | |
| 46 | 5 | 200.009 | RIM | RIM | |
| 47 | 200 | 610.620 | TINE DIA.0.25 | TINE DIA.0.256" (6.5 mm) | |
| 47 | 200 | 610.621 | TINE DIA.0.27 | TINE DIA.0.276" (7 mm) | |
| 48 | 5 | 210.180 | WHEEL ASSY | WHEEL ASSY., R.H.(TINE DIA.0.276" 7 mm) | |
| 48 | 5 | 210.181 | WHEEL ASSY | WHEEL ASSY., L.H.(TINE DIA.0.276" 7 mm) | |
| 49 | 5 | 210.182 | WHEEL ASSY | WHEEL ASSY., R.H.(TINE DIA.0.256" 6.5 mm) | |
| 49 | 5 | 210.183 | WHEEL ASSY | WHEEL ASSY., L.H.(TINE DIA.0.256" 6.5 mm) | |
| 50 | 1 | 600.003 | SCREW | | |
| 51 | 1 | 600.051 | NUT | | |



AGRICULTURAL MACHINERY
sitrex®

Zona Industriale-Viale Grecia, 8
06018 TRESTINA-(Perugia)-ITALY
Tel. +39.075.8540021-Telefax +39.075.8540523
e-mail: sitrex@sitrex.it www.sitrex.com

